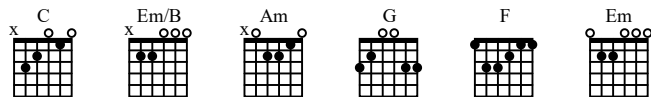


RUNAWAY TRAIN

As recorded by Soul Asylum

(From the 1992 Album GRAVE DANCERS UNION)



A Intro

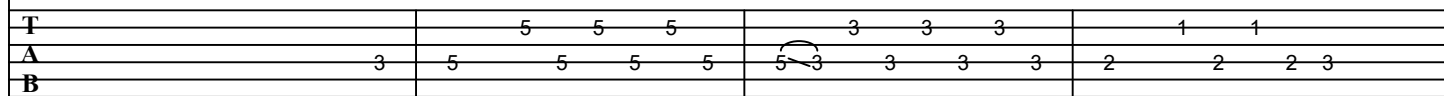
Moderately ♩ = 118

Gtr II



Gtr I

let ring

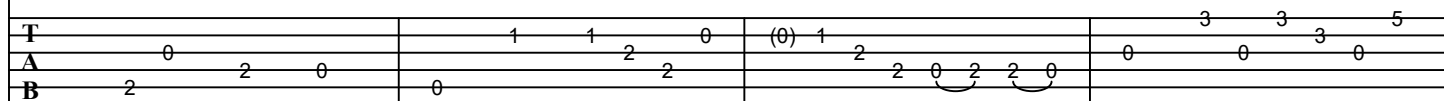
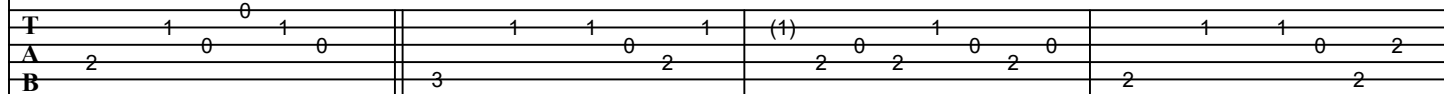


sl.

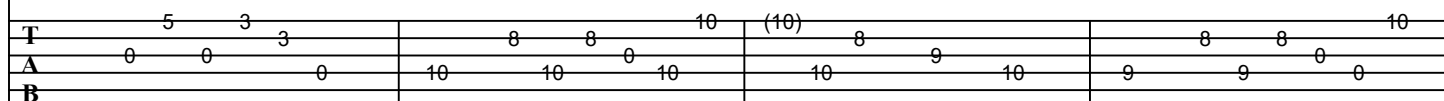
B 1st Verse



let ring



H P



17

Am G

T 10 10 8 8 10 10 (10) 10 10 8 0 3 3 3 5

A 9 9 9 9 9 9 9 9 9 9 0 3 3 3 0

B 9 9 9 9 9 9 9 9 9 9 0 3 3 3 0

21

F G C

T 5 5 3 3 1 1 0 2 3 0 3 3 3 3 0 3 1 3 0 0

A 0 0 0 0 3 2 2 0 2 3 0 3 3 3 0 0 0 0 0 0

B 0 0 0 0 3 2 2 0 2 3 0 3 3 3 0 0 0 0 0 0

25

Am F Em G

T 7 7 5 5 5 5 6 5 6 5 3 5 3 5 4 3 3 3 5 0 3 0

A 7 7 5 5 5 5 6 5 6 5 3 5 3 5 4 3 3 3 5 0 3 0

B 7 7 5 5 5 5 6 5 6 5 3 5 3 5 4 3 3 3 5 0 3 0

H

P

29

[C] Chorus C Gtr II Em/B

T 5 5 3 0 0 0 0 0 0 0 0 0 0 0 0 0 0 0 0 0 0 0

A 0

B 0

Gtr III

33

Am G

T 0

A 0

B 0

37

T (3) (3) (3) (3) (3) (3)

A (3) (3) (3) (3) (3) (3)

B (3) (3) (3) (3) (3) (3)

D 2nd Verse

40

C Gtr II Em/B

Gtr I

T 8 8 10 (10) 8 9 10 8 8 10 (10) 10 10

A 10 10 0 10 10 9 10 9 9 0 9 9

B 10 10 0 10 10 9 10 9 9 0 9 9

44

Am G

T 5 7 7 (7) 7 7 5 5 7 8 10 8 5 (5) 5 3 3

A 7 7 5 5 0 8 10 0 0 0 0 3 0

B 7 7 5 5 0 8 10 0 0 0 0 3 0

48

C Em/B

T 1 1 0 1 (1) 2 0 1 0 2 0 1 1 0 2 (2) 0 2 0

A 3 3 2 2 2 0 2 0 2 2 2 0 2 2 0

B 3 3 2 2 2 0 2 0 2 2 2 0 2 2 0

P

52

Am G

T 1 1 2 0 (0) 1 2 3 3 3 5 (5) 3 3 3

A 0 0 2 2 2 0 2 0 0 0 0 0 3 0

B 0 0 2 2 2 0 2 0 0 0 0 0 3 0

H

56

F G C Am

T 5 6 5 6 7 8 8 7 8 7 5 3 3 3 7 7 5 5

A 5 5 5 5 5 5 5 5 7 7 5 5

B 5 5 5 5 5 5 5 5 7 7 5 5

P sl. P

60

F Em G

T 5 6 5 6 5 3 5 3 5 4 3 3 3 3 5 (5) 5 5 3 3

A 5 5 5 5 5 4 0 3 3 3 3 0 0 0 0 3

B 5 5 5 5 5 4 0 3 3 3 3 0 0 0 0 3

P

E Chorus

64

C Em/B

Gtr II

Gtr III

T 0 0 0 0 0 0 0 0 0 0 0 0 0 0 0 0

A 0 0 0 0 0 0 0 0 0 0 0 0 0 0 0 0

B 0 0 0 0 0 0 0 0 0 0 0 0 0 0 0 0

68

Am G

T 0 0 0 0 0 0 0 0 0 0 0 0 0 0 0 0

A 0 0 0 0 0 0 0 0 0 0 0 0 0 0 0 0

B 0 0 0 0 0 0 0 0 0 0 0 0 0 0 0 0

F Interlude

72

C Em/B

Gtr II

Gtr I

T 8 8 8 10 (10) 8 8 8 10 (10) 10 10

A 10 10 10 10 10 9 10 9 9 0 9 9

B 10 10 10 10 10 9 10 9 9 0 9 9

Am G

76

T 9 10 8 8 10 10 (10) 10 10 8 7 8 3 3 5 (5) 5 5 3 3

A

B

F G C Am

80

T 5 6 5 6 5 7 8 8 7 8 7 5 3 3 3 7 7 5 5 5

A

B

P sl. P

F Em G

84

T 5 6 5 6 5 3 5 3 7 8 3 3 5 (5) 5 5 3 3

A

B

P

G 3rd Verse

C Em/B

88

T 10 9 8 7 6 5 4 3 2 1 0 (0) 1 2 1 2 2 0 3 3 0 3 (3) 3 3 3 3

A

B

Am G

92

T 0 2 2 1 0 (0) 1 2 1 2 2 0 3 3 0 0 (3) 0 3 0 3 3 0

A

B

H Chorus

96

Gtr II C Em/B

Gtr III

100

Am G

T A B

(0) (0) (0) (0)

(1) (1) (1) (1)

(2) (2) (2) (2)

(3) (3) (3) (3)

(4) (4) (4) (4)

(5) (5) (5) (5)

(6) (6) (6) (6)

(7) (7) (7) (7)

(8) (8) (8) (8)

(9) (9) (9) (9)

(10) (10) (10) (10)

(11) (11) (11) (11)

(12) (12) (12) (12)

(13) (13) (13) (13)

(14) (14) (14) (14)

(15) (15) (15) (15)

(16) (16) (16) (16)

(17) (17) (17) (17)

(18) (18) (18) (18)

(19) (19) (19) (19)

(20) (20) (20) (20)

(21) (21) (21) (21)

(22) (22) (22) (22)

(23) (23) (23) (23)

(24) (24) (24) (24)

(25) (25) (25) (25)

(26) (26) (26) (26)

(27) (27) (27) (27)

(28) (28) (28) (28)

(29) (29) (29) (29)

(30) (30) (30) (30)

(31) (31) (31) (31)

(32) (32) (32) (32)

(33) (33) (33) (33)

(34) (34) (34) (34)

(35) (35) (35) (35)

(36) (36) (36) (36)

(37) (37) (37) (37)

(38) (38) (38) (38)

(39) (39) (39) (39)

(40) (40) (40) (40)

(41) (41) (41) (41)

(42) (42) (42) (42)

(43) (43) (43) (43)

(44) (44) (44) (44)

(45) (45) (45) (45)

(46) (46) (46) (46)

(47) (47) (47) (47)

(48) (48) (48) (48)

(49) (49) (49) (49)

(50) (50) (50) (50)

(51) (51) (51) (51)

(52) (52) (52) (52)

(53) (53) (53) (53)

(54) (54) (54) (54)

(55) (55) (55) (55)

(56) (56) (56) (56)

(57) (57) (57) (57)

(58) (58) (58) (58)

(59) (59) (59) (59)

(60) (60) (60) (60)

(61) (61) (61) (61)

(62) (62) (62) (62)

(63) (63) (63) (63)

(64) (64) (64) (64)

(65) (65) (65) (65)

(66) (66) (66) (66)

(67) (67) (67) (67)

(68) (68) (68) (68)

(69) (69) (69) (69)

(70) (70) (70) (70)

(71) (71) (71) (71)

(72) (72) (72) (72)

(73) (73) (73) (73)

(74) (74) (74) (74)

(75) (75) (75) (75)

(76) (76) (76) (76)

(77) (77) (77) (77)

(78) (78) (78) (78)

(79) (79) (79) (79)

(80) (80) (80) (80)

(81) (81) (81) (81)

(82) (82) (82) (82)

(83) (83) (83) (83)

(84) (84) (84) (84)

(85) (85) (85) (85)

(86) (86) (86) (86)

(87) (87) (87) (87)

(88) (88) (88) (88)

(89) (89) (89) (89)

(90) (90) (90) (90)

(91) (91) (91) (91)

(92) (92) (92) (92)

(93) (93) (93) (93)

(94) (94) (94) (94)

(95) (95) (95) (95)

(96) (96) (96) (96)

(97) (97) (97) (97)

(98) (98) (98) (98)

(99) (99) (99) (99)

(100) (100) (100) (100)

I Outro

104

Gtr II C Em/B

Gtr I

108

Am G

T A B

5 5 5 3 1 1 1 0 2 (2) 0 2 0

5 5 5 5 3 3 2 2 0 2 2 2 0

5 5 5 5 3 3 2 2 0 2 2 2 0

sl.

112

C Em/B

Begin Fade

T A B

8 8 10 (10) 8 9 10 8 8 10 (10) 8 10 8 0

10 10 0 10 10 10 10 9 9 0 9 9 0

10 10 0 10 10 10 10 9 9 0 9 9 0

Am G

1

Fade Out

T 8 8 10 10 (10) 10 10 10 3 3 3 5 (5) 5 5 3 3

A 9 9 9 9 9 9 0 0 0 0 0 0 0 0

B

The musical score for 'Runaway Train' by Soul Asylum, page 7 of 7, features a guitar melody in standard notation and a corresponding guitar tab. The melody is written in treble clef and includes a key signature change from A minor (Am) to G major (G). The guitar tab shows fret numbers for the guitar and bass lines. The piece concludes with a 'Fade Out' instruction.